

15° 30° 45° 60° 75° 90° 105° 120° 135° 150° 165° 180°

THE PHAIDON ATLAS OF 21ST CENTURY WORLD ARCHITECTURE

1,037 Buildings	244 Single Houses	18 Libraries
	63 Schools	8 Embassies
653 Architects	11 Art Galleries	26 Hotels
	76 Museums	6 Railway Stations
6 Geographical Regions	7 Swimming Pools	Φ
	2 Town Halls	
89 Countries	57 Office Buildings	
	38 Universities	
	8 International Airports	

90°
75°
60°
45°
30°
15°
0°
15°
30°
45°
60°
75°
90°



Europe

Italy

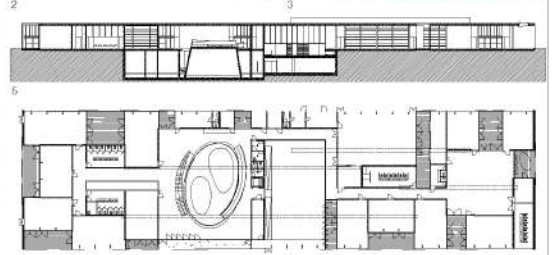
0665	Altavilla Vicentina, Italy	Kindergarten and Elementary School	Elisabetta Terragni	2007 EDU	0649 CUL Cerrobbio, Italy
0666	Bassano del Grappa, Italy	Nardini Performance and Research Centre	Massimiliano Fuksas Architetto	2004 CCM	0651 CCM Milano, Italy



0665 The school building sits at the foot of a small hill on the outskirts of Altavilla Vicentina, a small town southwest of Vicenza in northern Italy. In addition to classrooms for students of a kindergarten and a primary school, the building accommodates a gymnasium and a community auditorium. Surrounded mostly by single houses, the school stands out both in terms of its form and its size. The one-storey structure, a long and flat block 96 m (315 ft) in length, spreads over grassy terrain. A basement level is

buried under half the floor space of the ground floor. In plan, the building is clearly divided into three parts. The double-height – and shared – spaces of theatre and gymnasium are sandwiched between two clusters of classrooms, one at each end of the building. The theatre's conical shape rises from the basement into the foyer on the ground floor. On top, an elevated play and study platform for the children was created. A ramp and a flight of stairs follow the curve of the red coloured pot connecting the entrance

level with the theatre. The gymnasium is accessed separately via a ramp leading directly down to the bottom of the two-storey space. All classrooms have access to individual patios shielded from the outside by movable metal mesh sunscreens. The whole structure is held together, both spatially and structurally, by the massive concrete slabs of the floors and ceilings. These and other surfaces are either held in light gray or are brightly coloured, creating a joyful yet calm atmosphere – in contrast with the

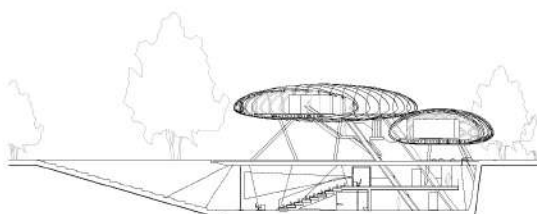


straightforward exterior and the form of the building – and turning its interior into a lively world of its own.

- 1 Exterior view from east
- 2 Theatre interior
- 3 Lavatory interior
- 4 Volume of theatre visible in foyer
- 5 Section through building
- 6 Ground-floor plan

Client
Altavilla Vicentina District
Area
2,700 m²/29,063 sq ft
Cost
€4,500,000
Coordinates
45.5124 11.4754

0666 Bassano del Grappa is a middle-sized town in the Veneto region, which is famous for the production of grappa. Located in a flat rural area south of the city, the Nardini Performance Centre provides an auditorium as well as research spaces to complement the adjacent distillery. The building has a basement, first and second floor but no ground floor. Two transparent bubble-like volumes appear to hover over a still stretch of water. Rough concrete walls frame grassy steps which lead down to full-height glass doors under a deep projecting canopy. Inside, a wooden arena for 100 people faces the entrance. Hidden behind this are illuminated glass stairs which introduce a change in materials while moving up to the offices and laboratories. Visitors cross what would be the ground floor – a shallow stretch of water reflecting the slender slanting columns that support the bubble-like volumes. A slanting lift supports the whole structure and connects all floors. Upstairs, a curved steel rib superstructure on H-beams is covered by glass panes. The glazing is point-supported by rounded joints which absorb the tolerances of both structure and glass. A complex heating and cooling system supplied by water from a nearby well ensures comfortable temperatures. The rounded volumes show a slightly green tint, resulting from the laminated glass blocking heat-producing infrared rays. At night, skylights in the water-concrete ceiling of the basement illuminate the structures from beneath.



- 1 Aerial view
- 2 Basement entrance
- 3 Bridge at basement level
- 4 Interior showing vertical circulation
- 5 Section through building

Client
Confidential
Area
5,672 m²/61,053 sq ft
Cost
Confidential
Coordinates
45.7403 11.7482



Europe

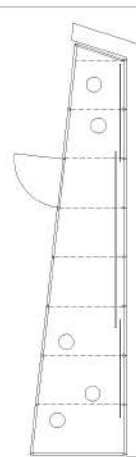
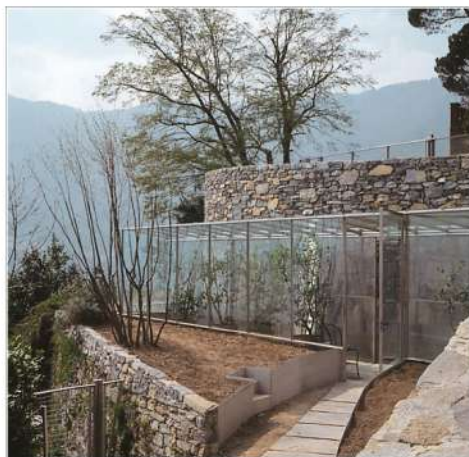
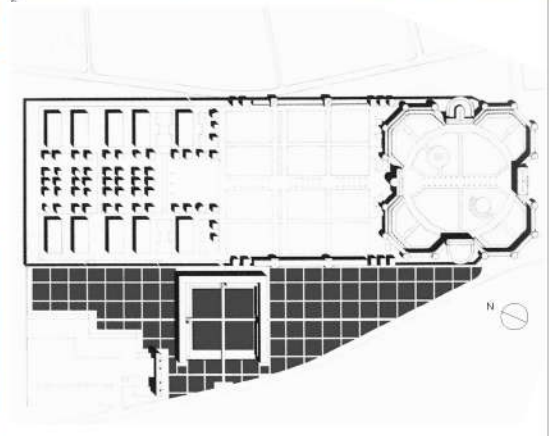
Italy

0648	Voghera, Italy	Cemetery	Antonio Monestiroli	2003 REL	
0649	Cernobbio, Italy	Greenhouse	Elisabetta Terragni	2002 CUL	0665 EDU Altavilla Vicentina, Italy

0648 This project is the fifth addition to the eighteenth-century Maggiore cemetery in Voghera. A large three-sided courtyard building serves as the new main entrance to the cemetery complex without replacing the existing entrance. The three courtyard-facing facades, separated from the courtyard by a moat of water, are built from exposed red brick and display white stone plaques arranged in a regular grid of five rows, each carved with an identical cross in its centre. These represent the 4,000 tombs which are arranged beyond the facades over three levels (one below ground, two above). Each of the three courtyard walls is interrupted by an iron gate with a copper-green paint finish. These lead to a covered gallery which provides access to individual tombs. The gallery is characterised by a solemn and reserved palette of materials: the same red brick in the courtyard is used for the walls, and floors are made from white Vicenza stone. The first floor is naturally lit by skylights and ventilated by small openings in the brick wall, visible in the courtyard facades. Around this structure, a wood of cypresses has been planted in a regular pattern, underneath which are burial tombs marked with brick edifices and white Vicenza stone tombstones. To the northwest of the courtyard sits the ossuary, shaped like a large portal. It is divided into five sections over two floors and contains rooms for individual contemplation, illuminated by skylights and small gaps in the walls.

- 1 View of central courtyard
- 2 Detail of white stone plaques
- 3 Iron gate in a courtyard wall
- 4 Site plan

Client
Confidential
Area
3,500 m²/37,660 sq ft
Cost
€3,235,000
Coordinates
45.0094 9.0515



0649 The southwestern edge of Lake Como profits from the proximity to Milano as well as from a Mediterranean landscape and climate. In winter frosts, lemon trees and similar vegetation require the shelter of conservatories. This greenhouse, attached to a villa overlooking the lake, nestles on the slope between retaining walls of local rubble stone, obtaining the right exposure to sunlight while protecting the citrus trees from wind and frost. The terraced plot forces the building on to a narrow and long trapezium-shaped footprint. In the rear, a trough assures proper drainage and sliding panes of polycarbonate help calibrate heat convection. The roof is glazed with tempered glass panes, which are slightly tilted towards the back and the drainage area. The entire structure is framed with T-section structural iron, custom assembled. All steel profiles are brushed to produce matte and smooth surfaces, complementing the misty texture of the polycarbonate. The overall effect is one of extreme lightness and unobtrusive presence in the landscape. To achieve this objective, the pavilion's parts needed to be minimized, while promising an extended lifespan. In the morning mist, the greenhouse seems to hover above the brown soil; in the midday heat, it disappears from view; and when the sinking sun casts deep shadows, it momentarily looks like a solid building.



- 1 View looking north
- 2 Greenhouse on narrow ledge
- 3 Tilted roof of glazed panes
- 4 Sliding panels, seen from inside
- 5 Detail of limestone walls
- 6 Floor plan

Client
Francesca Bianchi
Area
18 m²/194 sq ft
Cost
€25,000
Coordinates
45.8478 9.0834